



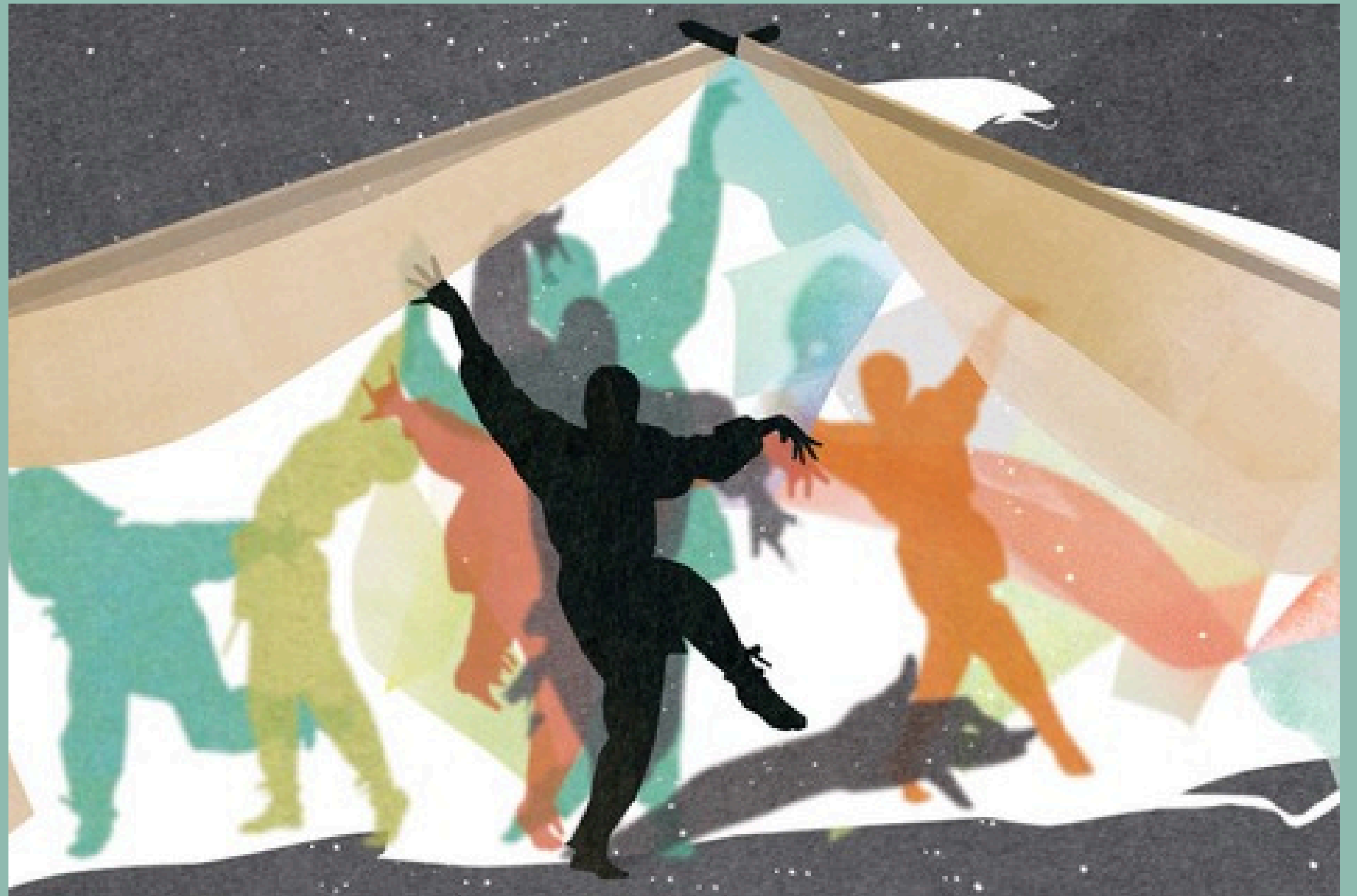
CLUB NINJA

VISUAL STORY

From a concept by
Takeshi Matsumoto

Co-Created and performed by:
Makiko Aoyama, Robert Howat
and Takeshi Matsumoto

The show is 45-50 minutes long without an
interval. You are welcome to leave and come
back at any time.



Welcome to Club Ninja - we are the Ninjas!

Ninja Dancer
Takeshi



Ninja Dancer
Makiko



Ninja Musician
Rob



Ninja Master
of sound & lights
Chaz



We sneak, slink and creep around the space. See if you can spot us 👁️👁️

Before the show begins

The performance takes place in the theatre.

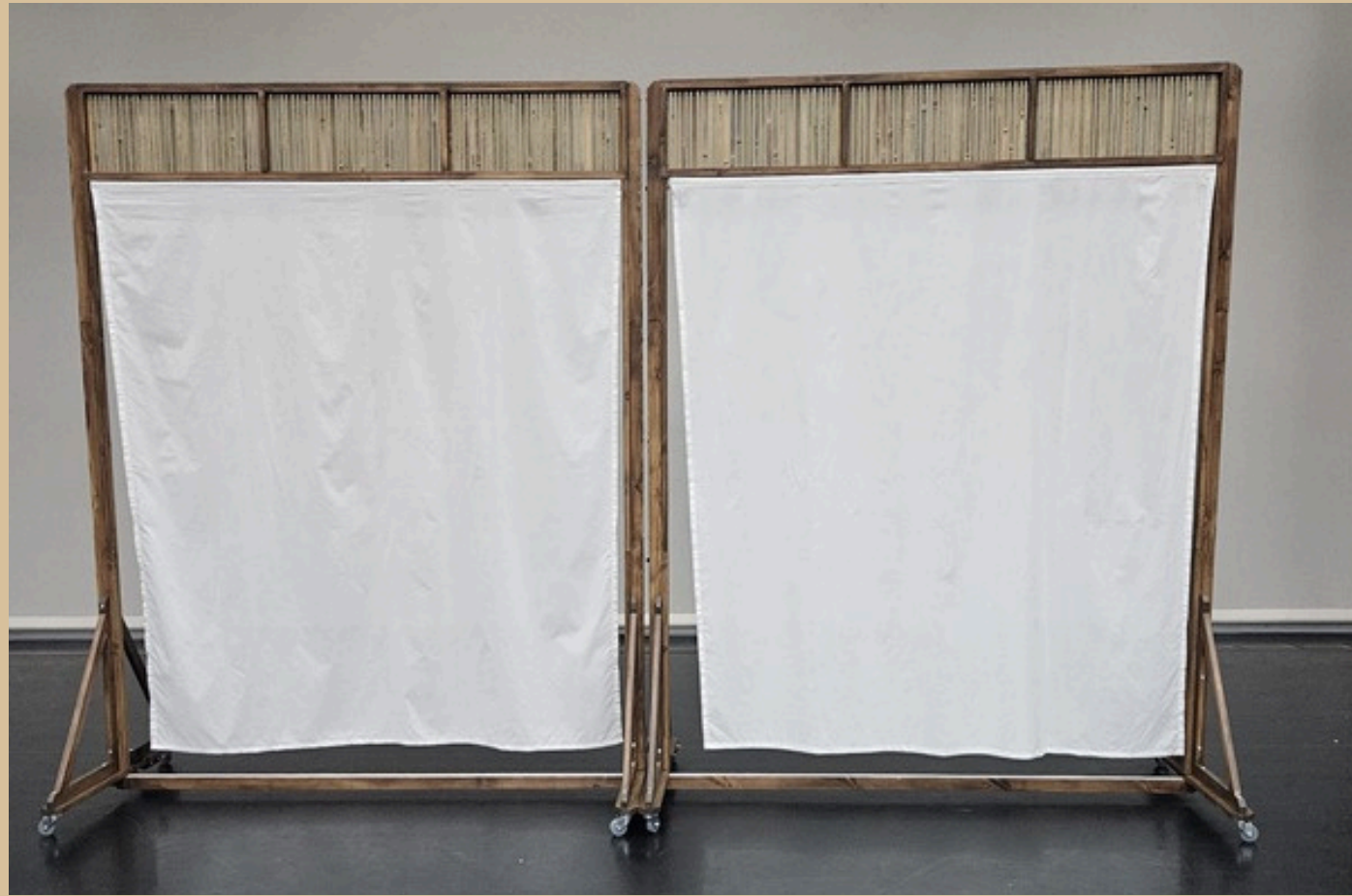
Before the show begins, we will ask you to remove your shoes.

Now you are ready to meet the Ninjas.

Takeshi and Makiko will greet you in the foyer, playfully hiding and reappearing behind their flags.

When they're ready, the Ninjas will invite you through the arch and into the theatre.





Inside the performance space there are bamboo screens like these.

The Ninjas will move them around throughout the performance.



There is atmospheric electronic music –
Sometimes this sounds like wooden percussion,
Sometimes like the sound of the piano, and
Sometimes like a party.

Sometimes it's slow and sometimes it's fast.

What can you hear?

The first section of the performance takes place on the middle of the stage.
You will be shown where to go and where you can sit on the floor.
Everyone is welcome.

There are chairs available for those who need them.



Get ready... the adventure is about to start.
The Ninja's move playfully through the audience.

They crouch low and reach high.
Jumping, spinning, running.

Forwards and backwards. Quickly and slowly.

Light and shade

The music stops and there is silence.

Light appears.

Shadows move in the darkness.

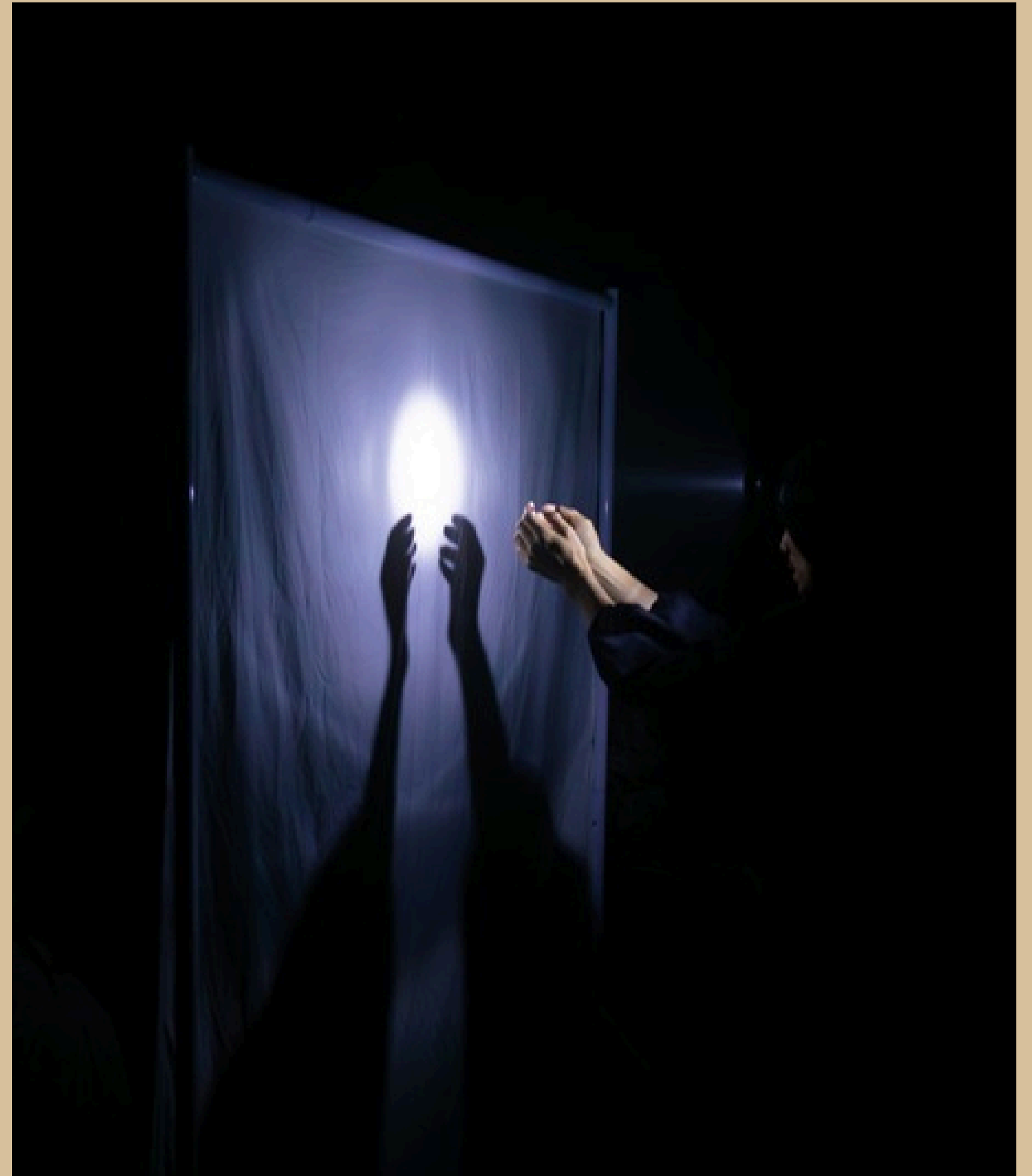
Nothing is as it seems.

The Ninjas run from the light.

They run towards it.

Be prepared for the darkness.

What can you see?





Fingers Dancing

Light shines upon the Ninja's fingers.

Watch them make their fingers dance.

Fingers jump up high.

Fingers walk across the floor.

Can you wiggle and move your fingers like the Ninjas?

The sound changes. Rain is falling.

There's a storm coming.



The stage fills with screens.

The Ninja's invite you to follow them to find shelter from the storm.

Walk like a Ninja to the front of the stage, where you will be invited to sit on cushions, chairs or bean bags.



Shadow Play

The music will change to suspenseful, pulsing and dreamlike.

The screens move. The lights change.

Keep looking for the Ninjas 🙈 🥷

They hop in and out of the moving screens –
Spinning, gliding, crouching, crawling.

Do you see the shadows?

What animals can you see?

Time to Dance

Do you like dancing? You do??!
Then join our Ninjas on the dance floor
for a Ninja dance party.

Can you sneak and creep like a Ninja?
Spin, jump and twist to the music.
Copy the Ninja's moves or make your own

You can make the shadows dance too.
Make silhouettes BIG and small- see how they
move and change when you do.

Explore the different shapes you can you make with your body.



Whoosh

The performance comes to an end.

The dancing Ninjas fly their flags one more time.

Then **Whoosh**, the show is over.

You may clap our Ninja's performance.

The lights will go up and the theatre staff will help you leave.

Thank you for coming.

See you next time at Club Ninja!



Ninja notes: Info on the show

Sharpen your senses and step into the action!

These Ninja Notes hold everything you need to know about Club Ninja..

- The show lasts for approximately 45–50 minutes without an interval, including a short section at the end where you can join the Ninja's for some shadow play
- You are welcome to leave and re-enter the space at any time
- Please leave large bags and buggies outside
- The show is co-created and performed by Makiko Aoyama, Robert Howat and Takeshi Matsumoto



Club Ninja is commissioned by Sadlers Wells. Supported by Big Imaginations and Z-arts, Horizon: Performance Created in England, South East Dance, DanceEast and using public funding by the National Lottery through Arts Council England.



Supported using public funding by
**ARTS COUNCIL
ENGLAND**



Baylis

**SOUTH EAST
DANCE**

**DANCE
EAST**
MOVE | BE MOVED

**Ichi
Ni
San**

Words from the Shadows of the Stage

Ninja – A person who moves quietly and quickly, using special skills to solve problems, sneak past obstacles, and help others.

Silhouette – A dark shape that you can see when something is in front of the light. You can see the outline, but not the details inside.

Spotlight – A bright light that shines on someone or something important during the show. It helps everyone see the star of the moment!

Stage – The special place where the performance happens. It's like a story playground where actors act, dancers dance, and stories come alive.

Visual Story – a short, friendly, and illustrated guide that helps children – especially those who might benefit from extra preparation (like children with autism, sensory sensitivities, or anxiety) – understand what to expect when they go to see the show.

CLUB NINJA

For more info on Access, please contact: lydiaidakula@gmail.com

www.ichinisan.co.uk/clubninja

Visual guide created by Emily Jameson

Title illustration by Natsko Seki
Additional photos by Maria Polodeanu