



PLAY-ALONG PLINK AND BOO VISUAL GUIDE

What is a Visual Guide?

A visual guide gives you lots of information about Z-arts and the show you are going to see, using pictures and accessible text.

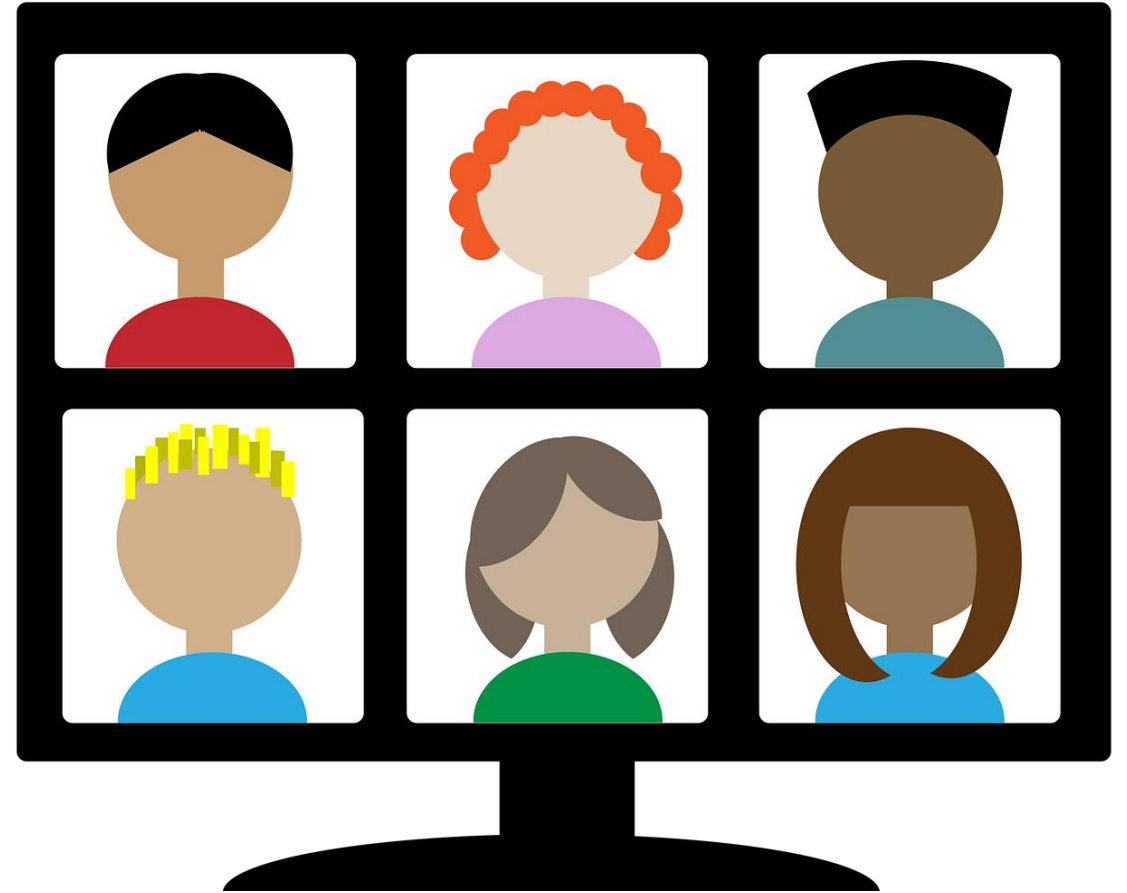
They are suitable for anyone who would benefit from a clear and accessible introduction to Z-arts and the show you have booked to see.



How Do I Watch The Show?

Your grown up will be sent an email which includes:

- An activity pack to make some objects before the show
- A Vimeo link to watch the show. There will be a password in your grown up's email for you to access this.



What to expect in the show

This show combines watching a filmed performance with playing along with real objects in your own homes.

The objects are the same as the ones you'll see in the show. You can download an activity pack that shows you how to make these objects, using things you can find around the house.

Play-Along Plink and Boo uses minimal text. The performers use Sign Supported English (SSE) to accompany the few words that are used.



Do you have any other questions about the show?

Please get in touch!



@Z_arts_mcr #BIDigiFest



tiffany@z-arts.org

We hope you enjoy the show!